

Dear Community Member,

June 4, 2026

CHG Holdings LLC is reaching out to you as a resident/property owner in general proximity to the proposed Harris Creek Quarry project. You are invited to attend a community informational meeting where we can share accurate project details, answer questions and receive feedback. Here are the important meeting details:

Date: Saturday, June 20, 2026

Time: 11:00 AM

Location: Outdoors; field across from historic cabin site/Trail Creek Meadows Subdivision entrance on Harris Creek Road

**Seating will not be provided — please bring your own chair*

The Project. CHG Holdings LLC has submitted a Conditional Use Permit (CUP) application to Boise County for the proposed Harris Creek Quarry. The primary project site is located on property owned by Dave and Mandi Williams (Boise County Parcel RP07N04E330602 – one mile south of start of pavement, toward Harris Creek Summit. See map enclosed).

The Process. An initial public hearing is scheduled for June 18th, 2026 in Garden Valley; however, CHG has elected to table the full hearing of the application until the July 16th, 2026 Planning & Zoning Commission meeting in Idaho City. We made this decision in order to first provide time for this community meeting.

The Purpose. The Harris Creek Quarry will initially provide rock and gravel for CHG-affiliated property in immediate proximity to the quarry (i.e. maintenance/construction of roads in the Trail Creek Meadows Subdivision, Harris Creek Heights Subdivision and CHG owned property located east of Harris Creek Road). A majority of all future produced material under the CUP is intended for County public road improvement use. The Boise County Road & Bridge Department intends to upgrade sections of public roads from existing dirt/decomposed granite to crushed basalt gravel roads sourced from the quarry in order to provide an actual solid road base and much greater durability.

We understand that projects like this can raise questions and concerns. We are committed to addressing those concerns with straightforward information and honest engagement. Please join us on June 20th at 11:00 AM to learn more.

Regards,

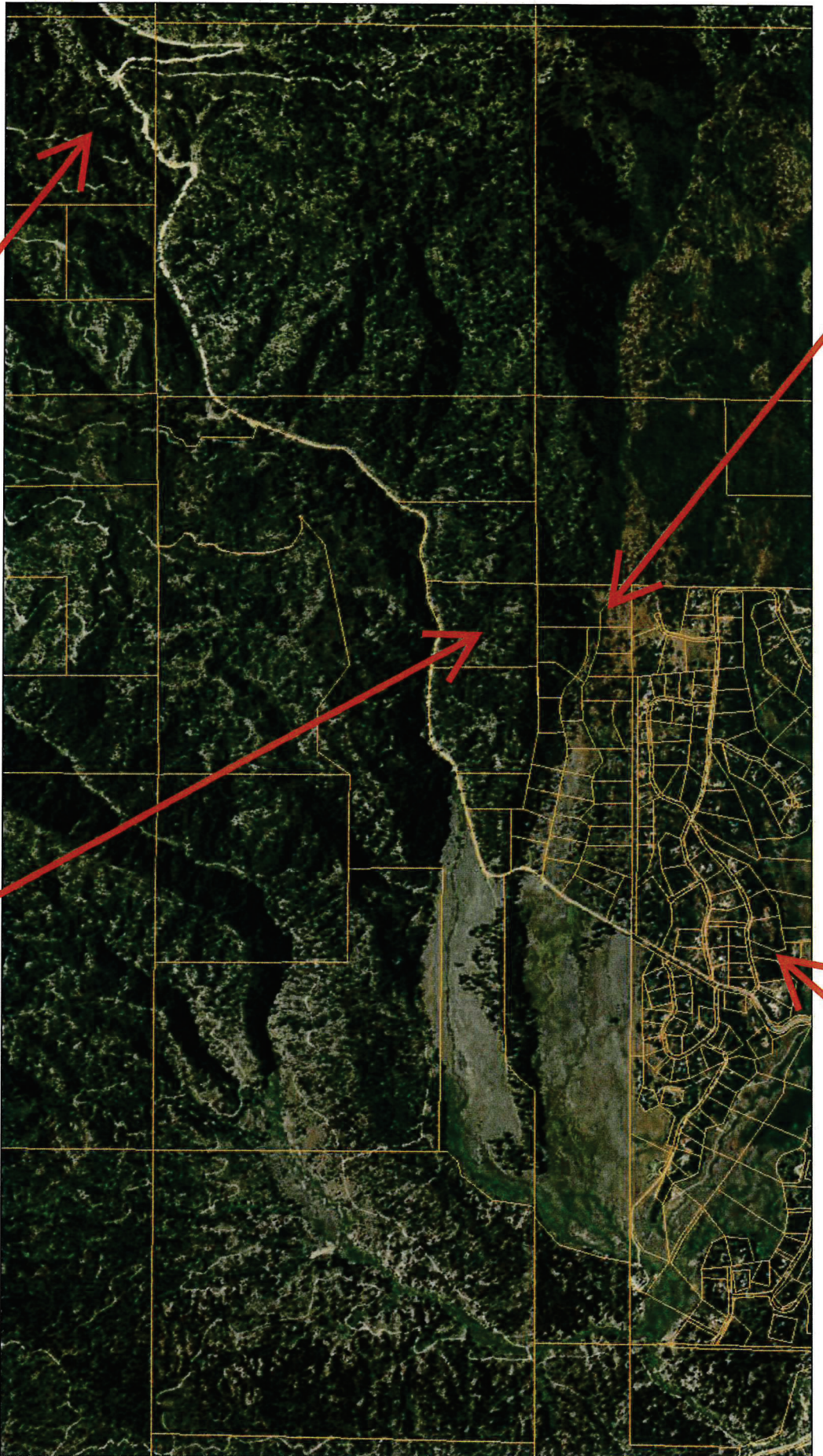
Ian Gee/Derek Cooper
CHG Holdings LLC

Trail Creek Meadows Sub



ArcGIS Web Map

Star Ranch Sub

Edit Image

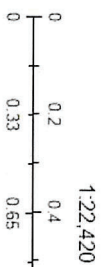


6/2/2026, 5:04:57 PM

-  Boise County Mask
-  Boise County Parcels

Harris Creek Summit

Quarry Site



HARRIS CREEK QUARRY - CUP

KEY POINTS

- **Limited Seasonal Crushing Operations** – For each calendar year crushing operations not to exceed 10-week season. Months of April/May initially projected as crushing season, depending on weather/soil conditions.
- **Limited CUP Term** – Fixed CUP term with not to exceed 5 calendar years (i.e. 2027-2031) of limited season crushing operations (per above). Any remaining years of approved term reserved for removal of existing processed material and site remediation, as needed.
- **Efficient Production** – The mobile impact crusher plant unit (see photo enclosed) only needs approximately 10-15 actual days of full crusher operations to produce anticipated minimum County supply for the calendar year (i.e. minimum volume each year will be provided to Boise County during 5-year term). The 10-week annual operations season simply allows for a flexible operational window given unknown weather and site conditions.
- **Quality Materials**– Crushed basalt is considered to be the best material for road gravel. Its dense composition makes it highly resistant to crushing, wear and weathering. When crushed the basalt material has superior interlocking and compaction characteristics, excellent traction and holds up well to erosion. (*Note: crushed basalt rock samples will be shown at the community meeting*)
- **Strategic Location** – The quarry property adjoins Harris Creek Road and provides efficient access for County loading/hauling. Given driver hours, equipment wear/tear and the price of diesel, extended haul distances/costs significantly limit Boise County Road improvement projects within its limited budget. In addition to the material quality, this quarry site will allow the County to more cost effectively improve high use roads like Harris Creek Road and others that provide access to the Boise Basin.
- **Site and Area Impact** – The quarry crushing equipment will be located approximately 1000 linear feet uphill and away from Harris Creek Road. Recent decibel/sound testing conducted at equal elevation during crushing equipment operation showed the decibel level at 60 i.e. normal human conversation levels) when measured 800 feet from the crusher unit. At 1000 feet away, sound will be even less.

Mobile Impact Crusher Equipment

