



August 18, 2025

Alex Gross  
Boise County Planning & Zoning Administrator  
P.O. Box 1300  
Idaho City, Idaho 83631

RE: Harris Creek Heights  
Subject: Roadway Profiles – Preliminary Plat Application

Dear Alex,

Ardurra performed an inspection on the roadways currently under construction on the Harris Creek Subdivision on August 8<sup>th</sup>. The roadways have been excavated, filled and compacted to top of subgrade level. Gravel has not been placed yet, and final side slopes have not been completed. The inspection and survey were completed to examine the profile slopes of the roadway.

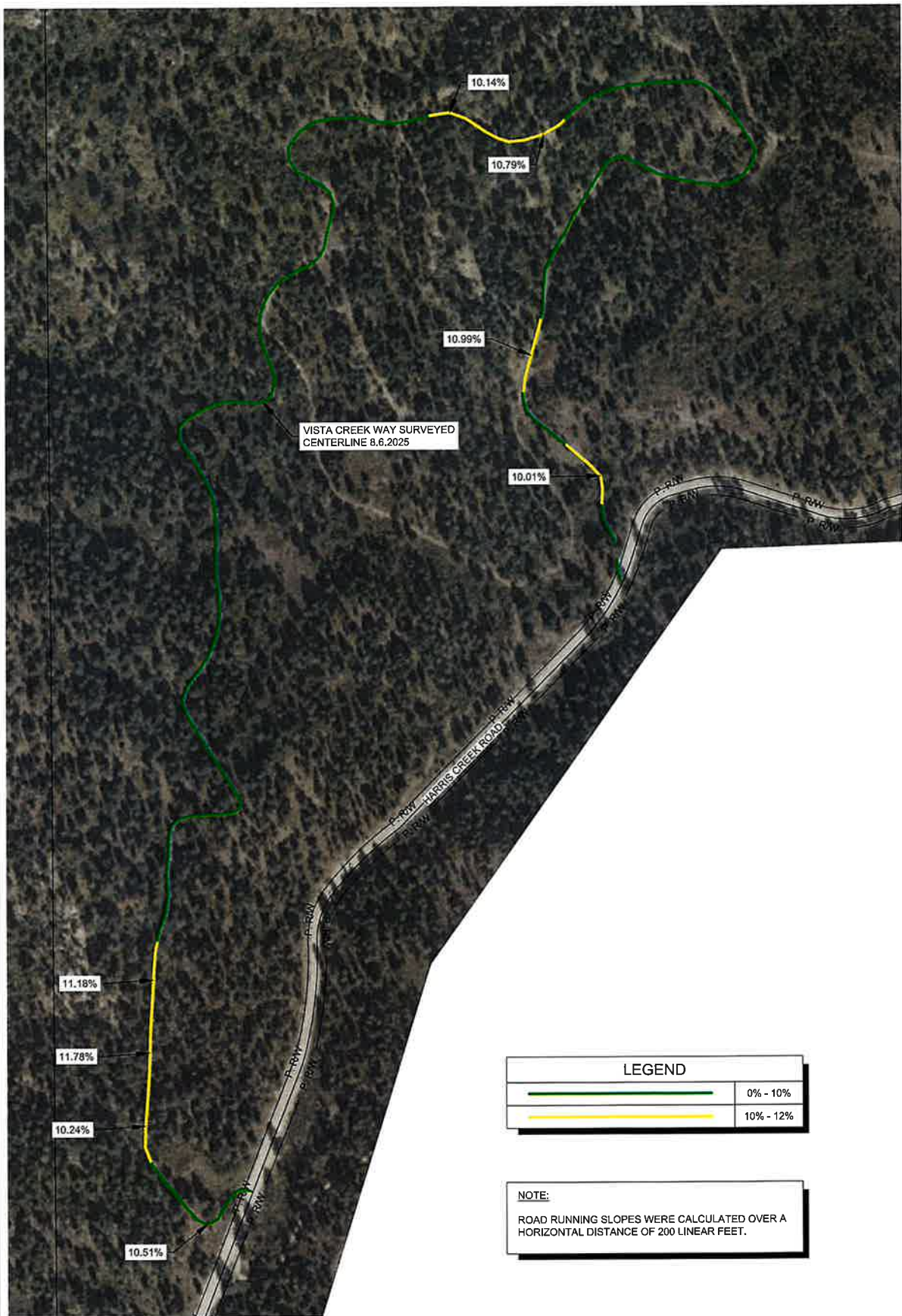
There are some small sections where the centerline profile exceeds 12% within the subdivision. However, when the centerline points are examined in 200' intervals, all centerline profile slopes are under 12%. The attached display shows the centerline profile slopes. If you have any questions, please feel free to contact me at (208) 442-6300.

Sincerely,

ARDURRA



Patrick Colwell, PE  
Project Manager



LEGEND	
	0% - 10%
	10% - 12%

**NOTE:**

ROAD RUNNING SLOPES WERE CALCULATED OVER A HORIZONTAL DISTANCE OF 200 LINEAR FEET.

## HARRIS CREEK HEIGHTS VISTA CREEK ROAD SLOPES



DATE: 8/12/25 JOB: 230861

**ARDURRA**

332 N. BROADMORE WAY  
NAMPA, IDAHO 83687

208-442-6300 | WWW.ARDURRA.COM