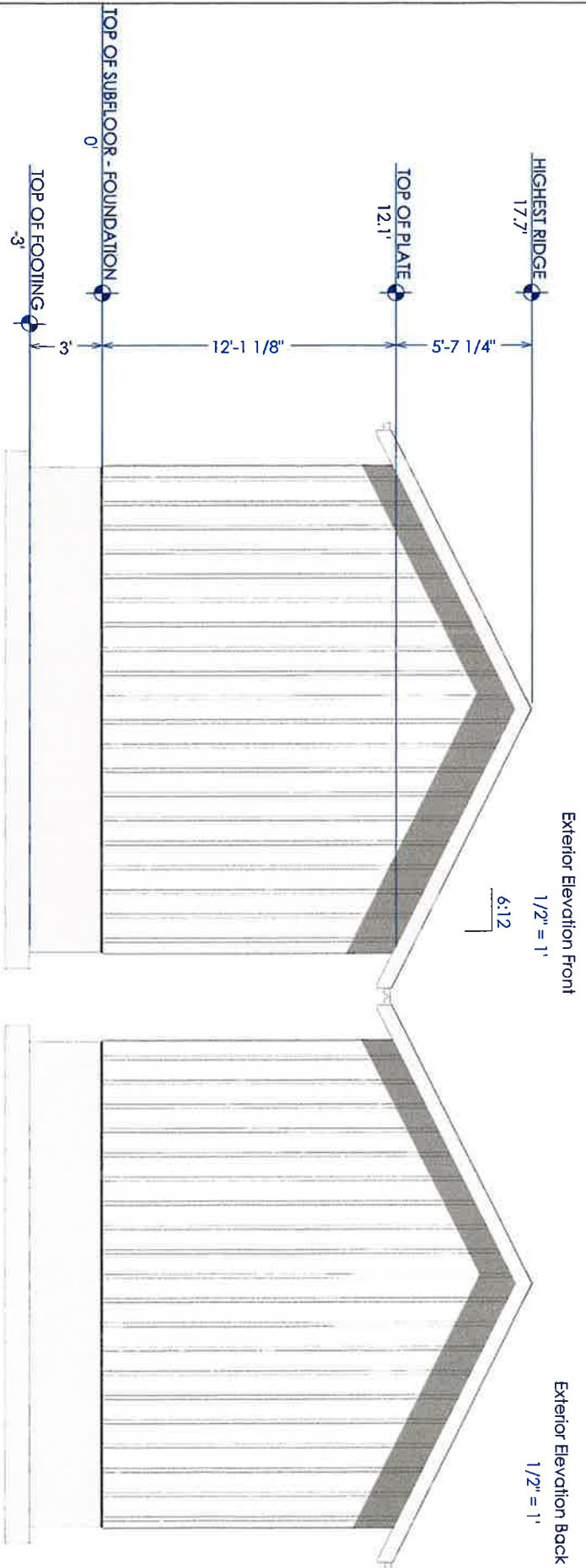


1. Drains
2. Table saws
3. Sinks
4. Cryo-vac
5. Grinder
6. Cutting Poly<sup>board</sup> table
7. Sausage



Exterior Elevation Front  
1/2" = 1'

Exterior Elevation Back  
1/2" = 1'



Exterior Elevation Right 1/4" = 1'



Exterior Elevation Left 1/4" = 1'

**CONCEPT**

Elevations  
RUBY HILLS  
Coats Construction Concepts

DRAWINGS PROVIDED BY:  
**DRAFTING**  
STUDIO

DATE:  
8/11/2024  
SCALE:  
SHEET:  
P-2