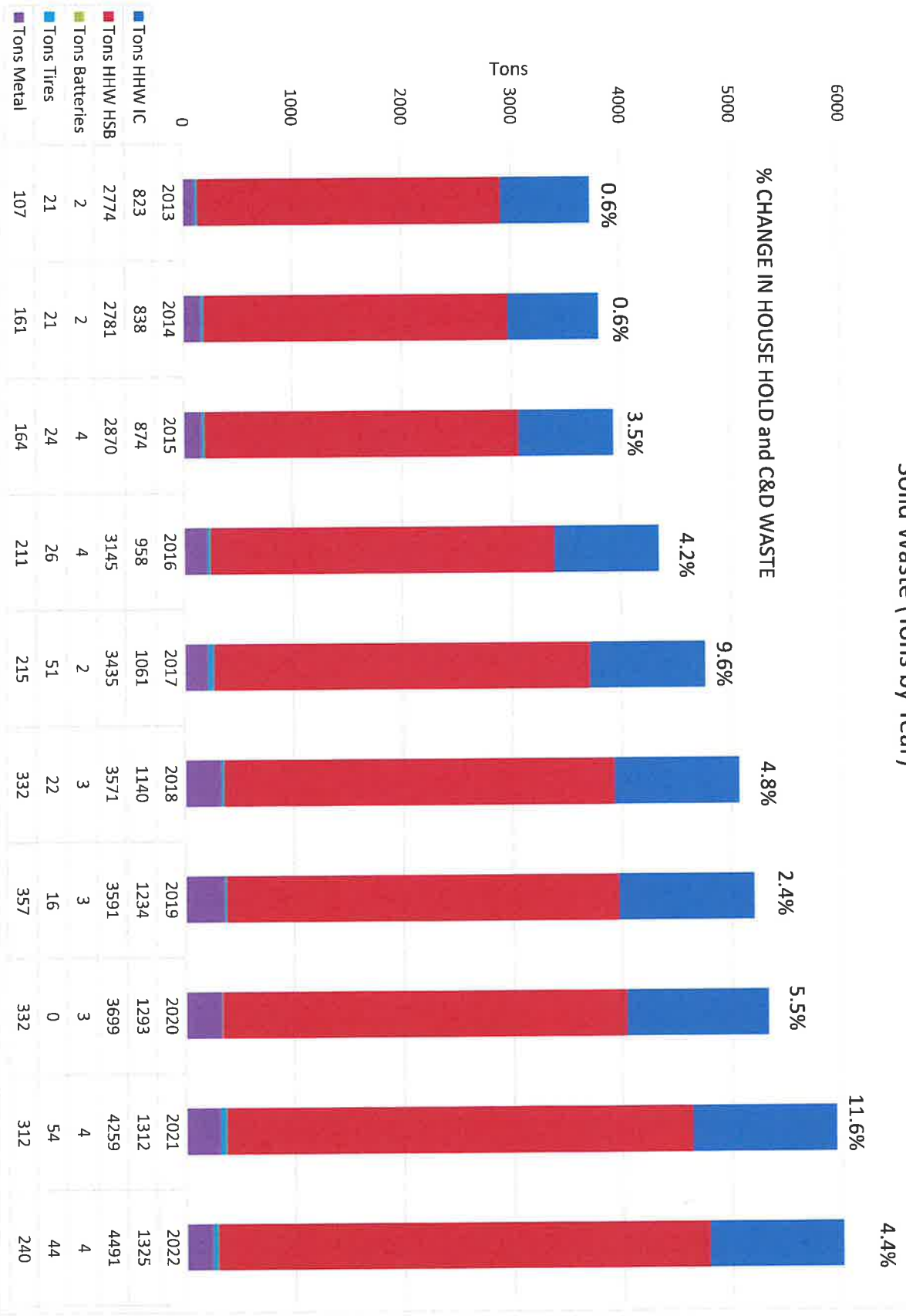
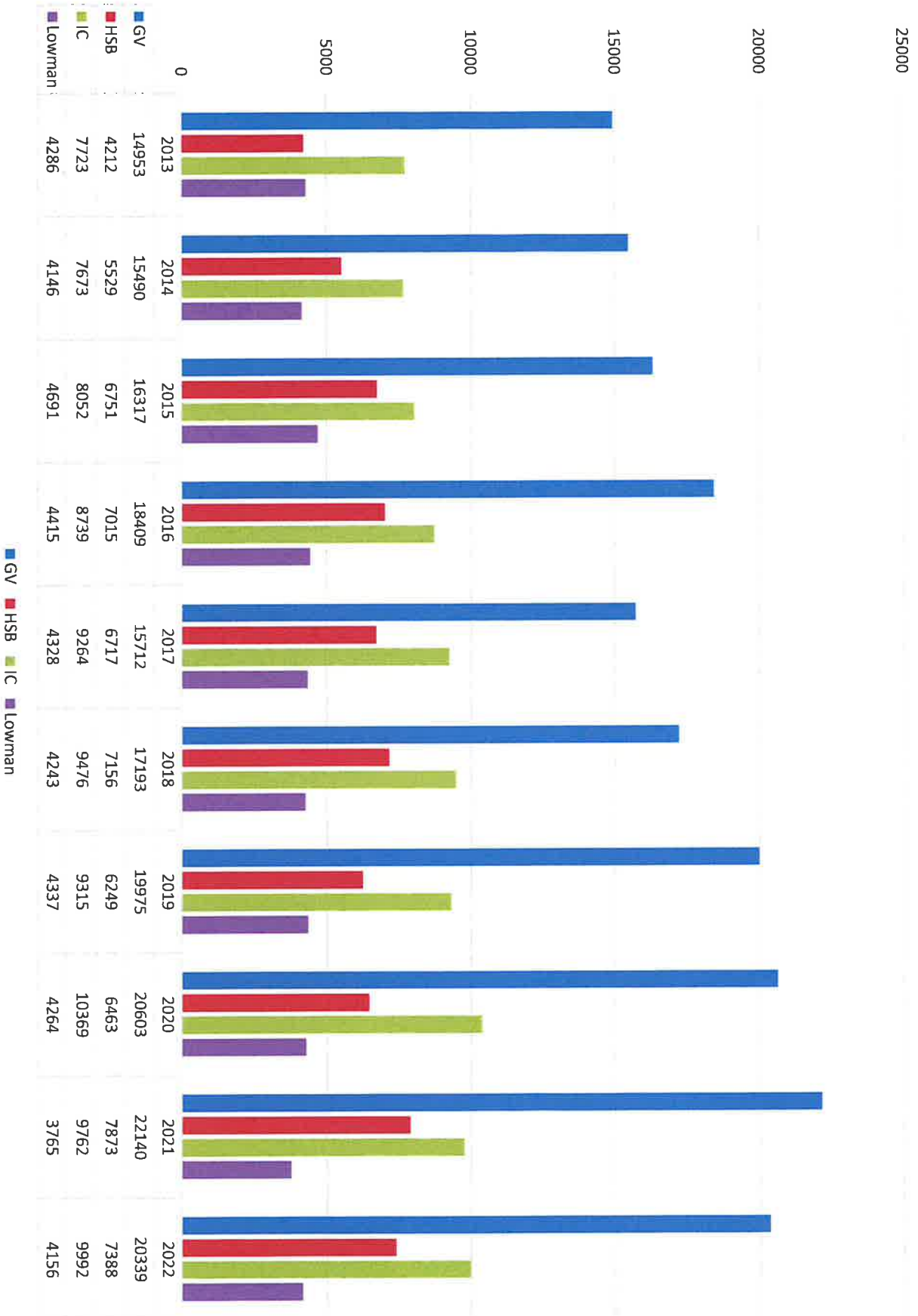


### Solid Waste (Tons by Year)

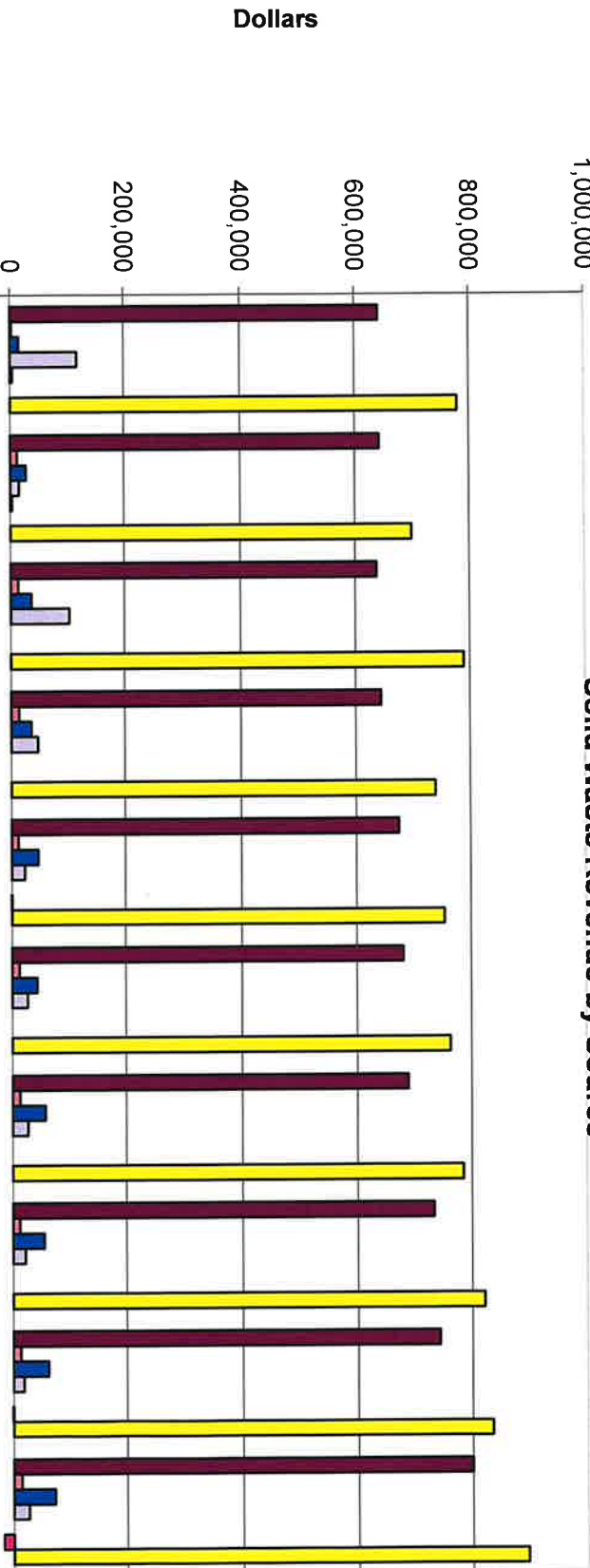


# Car Counts



1,000,000

**Solid Waste Revenue by Source**



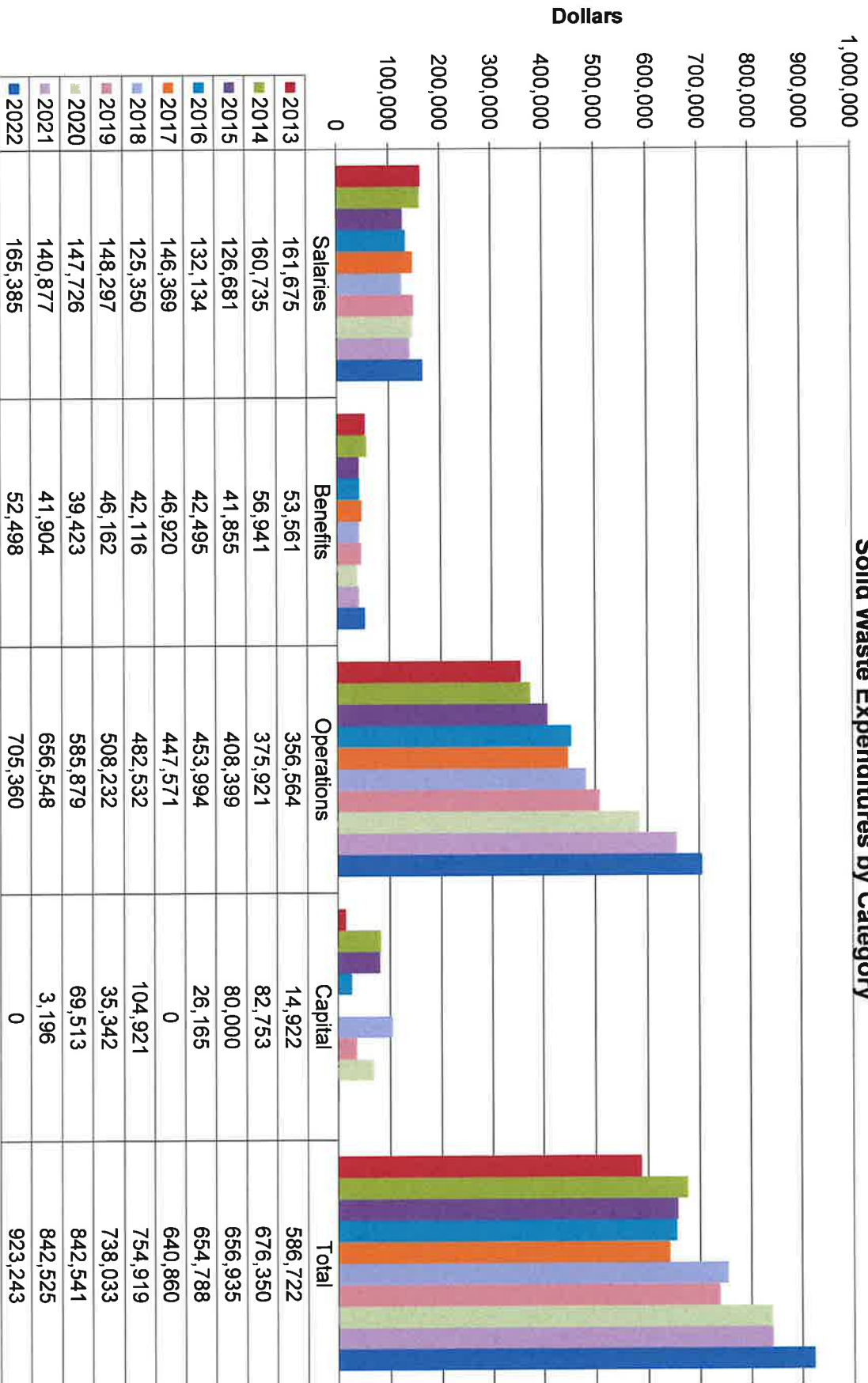
	2013	2014	2015	2016	2017	2018	2019	2020	2021	2022
Special Fees	640,813	642,678	637,086	643,886	674,081	681,326	688,892	733,901	743,619	799,715
Special Fees (Exempt)	2,149	11,659	13,043	13,502	11,353	12,366	12,663	12,085	12,664	13,961
Landfill Fees	14,946	27,071	35,969	34,954	46,198	43,374	57,357	54,474	61,449	72,608
Other Revenue	117,479	15,194	103,432	46,630	22,223	26,582	26,443	21,207	18,065	26,796
New Construction	4,022	2,679	0	0	0	0	0	0	0	0
Transfers	0	0	0	0	-64	0	0	0	-605	-16,591
Total	779,409	699,281	789,530	738,972	753,791	763,648	785,355	821,667	835,192	896,489

### Solid Waste Revenues vs. Expenditures

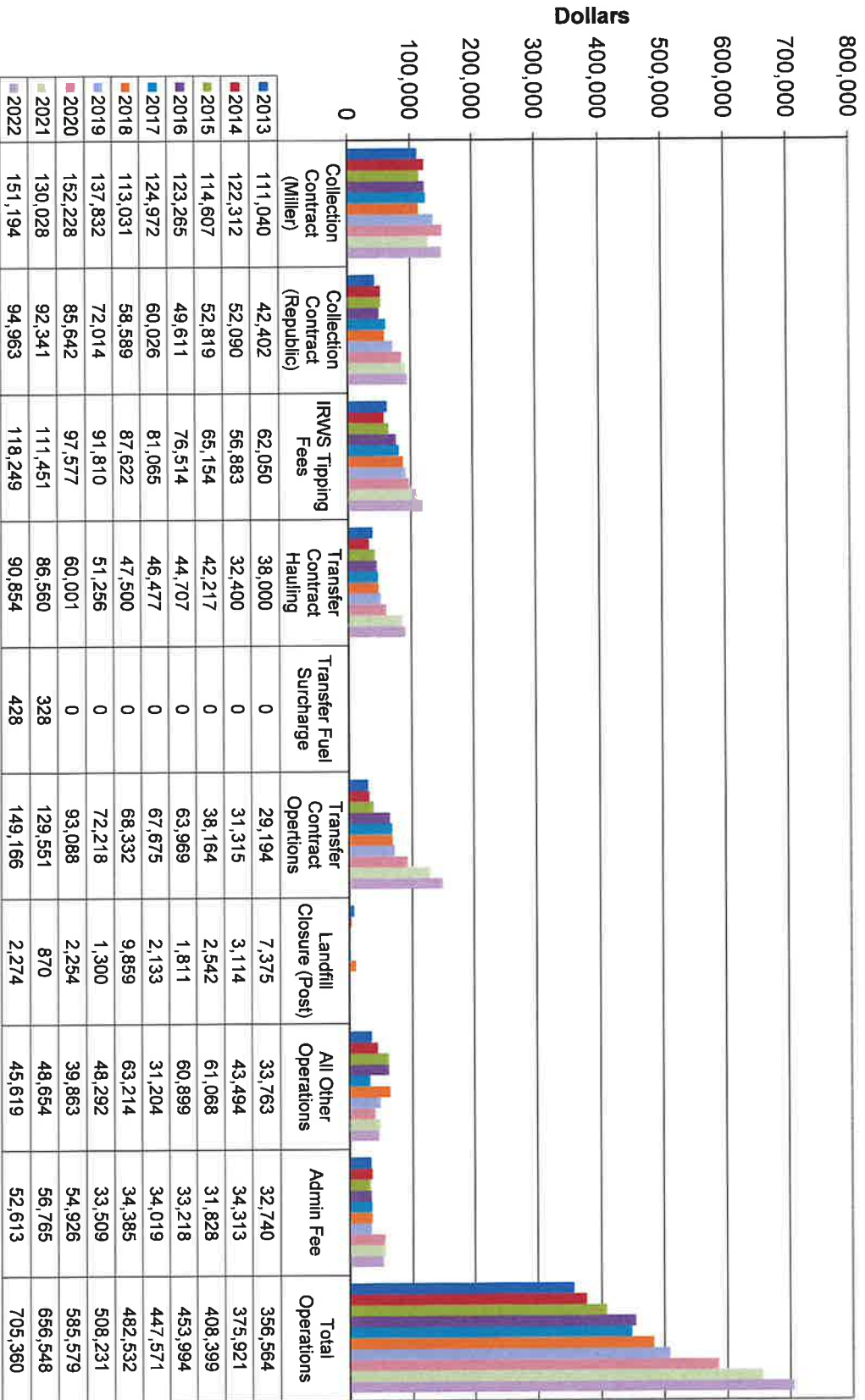


	2013	2014	2015	2016	2017	2018	2019	2020	2021	2022
Total Revenues	779,409	699,281	789,530	738,972	753,791	763,648	785,355	821,667	835,192	896,489
Total Expenditures	586,722	676,350	656,935	654,788	640,860	754,919	738,033	842,541	842,525	923,243
Difference	192,687	22,931	132,595	84,184	112,931	8,729	47,322	(20,874)	(7,333)	(26,754)

### Solid Waste Expenditures by Category



## Operating Expenditures



### Capital Expenditures

