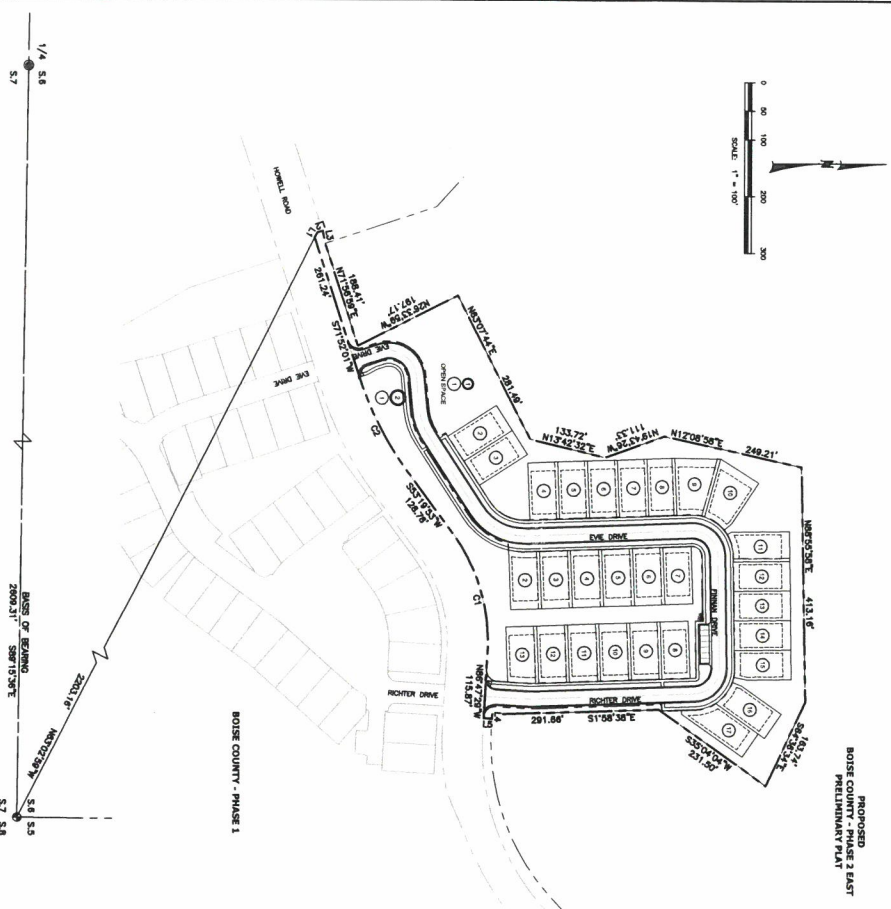


PRELIMINARY PLAT

FOR HOWELL VINEYARDS SUBDIVISION PRELIMINARY PLAT

A PARCEL OF LAND LOCATED IN THE SE 1/4 OF SECTION 6, T.5N., R.2.E., B.M. BOISE COUNTY, IDAHO JANUARY, 2022



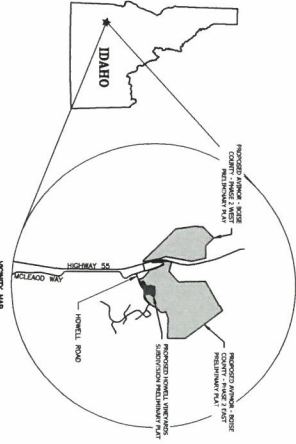
PROPOSED
BOISE COUNTY PHASE 2 EAST
PRELIMINARY PLAT

- NOTES:**
1. THIS SUBDIVISION IS SUBJECT TO THE BOISE COUNTY PLANNING DEPARTMENT.
 2. EASEMENTS ARE PROVIDED TO ALL BUNDLED LOTS BY THE PLANNING DEPARTMENT.
 3. THE PLANNING DEPARTMENT IS SUBJECT TO THE BOISE COUNTY PLANNING DEPARTMENT.
 4. THE PLANNING DEPARTMENT IS SUBJECT TO THE BOISE COUNTY PLANNING DEPARTMENT.
 5. THE PLANNING DEPARTMENT IS SUBJECT TO THE BOISE COUNTY PLANNING DEPARTMENT.
 6. THE PLANNING DEPARTMENT IS SUBJECT TO THE BOISE COUNTY PLANNING DEPARTMENT.
 7. THE PLANNING DEPARTMENT IS SUBJECT TO THE BOISE COUNTY PLANNING DEPARTMENT.
 8. THE PLANNING DEPARTMENT IS SUBJECT TO THE BOISE COUNTY PLANNING DEPARTMENT.
 9. THE PLANNING DEPARTMENT IS SUBJECT TO THE BOISE COUNTY PLANNING DEPARTMENT.
 10. THE PLANNING DEPARTMENT IS SUBJECT TO THE BOISE COUNTY PLANNING DEPARTMENT.
 11. THE PLANNING DEPARTMENT IS SUBJECT TO THE BOISE COUNTY PLANNING DEPARTMENT.
 12. THE PLANNING DEPARTMENT IS SUBJECT TO THE BOISE COUNTY PLANNING DEPARTMENT.
 13. THE PLANNING DEPARTMENT IS SUBJECT TO THE BOISE COUNTY PLANNING DEPARTMENT.
 14. THE PLANNING DEPARTMENT IS SUBJECT TO THE BOISE COUNTY PLANNING DEPARTMENT.
 15. THE PLANNING DEPARTMENT IS SUBJECT TO THE BOISE COUNTY PLANNING DEPARTMENT.

SHEETS	DESCRIPTION
1	COVER SHEET
2	LOT LAYOUT PLAN
3	GRADING AND DRAINAGE PLAN
4	UTILITY PLAN

PROJECT INFORMATION
 LOCATION: PORTION OF THE SE 1/4 OF SECTION 6 OF T5N., R2E., B.M., BOISE COUNTY, IDAHO
 NUMBER OF BUNDLED LOTS: 28
 NUMBER OF COMMON LOTS: 2

LOT #	AREA (SQ. FT.)	AREA (AC.)
1	1,131	0.0258
2	1,131	0.0258
3	1,131	0.0258
4	1,131	0.0258
5	1,131	0.0258
6	1,131	0.0258
7	1,131	0.0258
8	1,131	0.0258
9	1,131	0.0258
10	1,131	0.0258
11	1,131	0.0258
12	1,131	0.0258
13	1,131	0.0258
14	1,131	0.0258
15	1,131	0.0258



DATE/TECHNICAL ENGINEER
 INNOVATIVE GEOTECHNICAL
 2000 E. PARKWAY RD., SUITE 2110
 MERIDIAN, ID 83642
 (208) 464-1590

SIGNATORY
 IDAHO SURVEY GROUP
 1450 E. WATERGATE ST.
 MERIDIAN, ID 83642
 (208) 944-4379

OWNER/DEVELOPER
 AVIMOR DEVELOPMENT, LLC
 1464 W. HAZEL AVENUE
 MERIDIAN, ID 83642
 (208) 339-4343

HOWELL VINEYARDS SUBDIVISION PRELIMINARY PLAT

COVER SHEET

DATE: JANUARY 2022
 PROJECT: 2022-0102
 SHEET 1 OF 4

NO.	REVISIONS	DATE	BY	CHKD.	APP'D.

RiveRidge ENGINEERING COMPANY

2447 S. Vista Ave.
 Boise, Idaho 83705
 (208) 344-1180
 www.rvrdg.com

AVIMOR
 Fresh Air. Fresh Ideas.