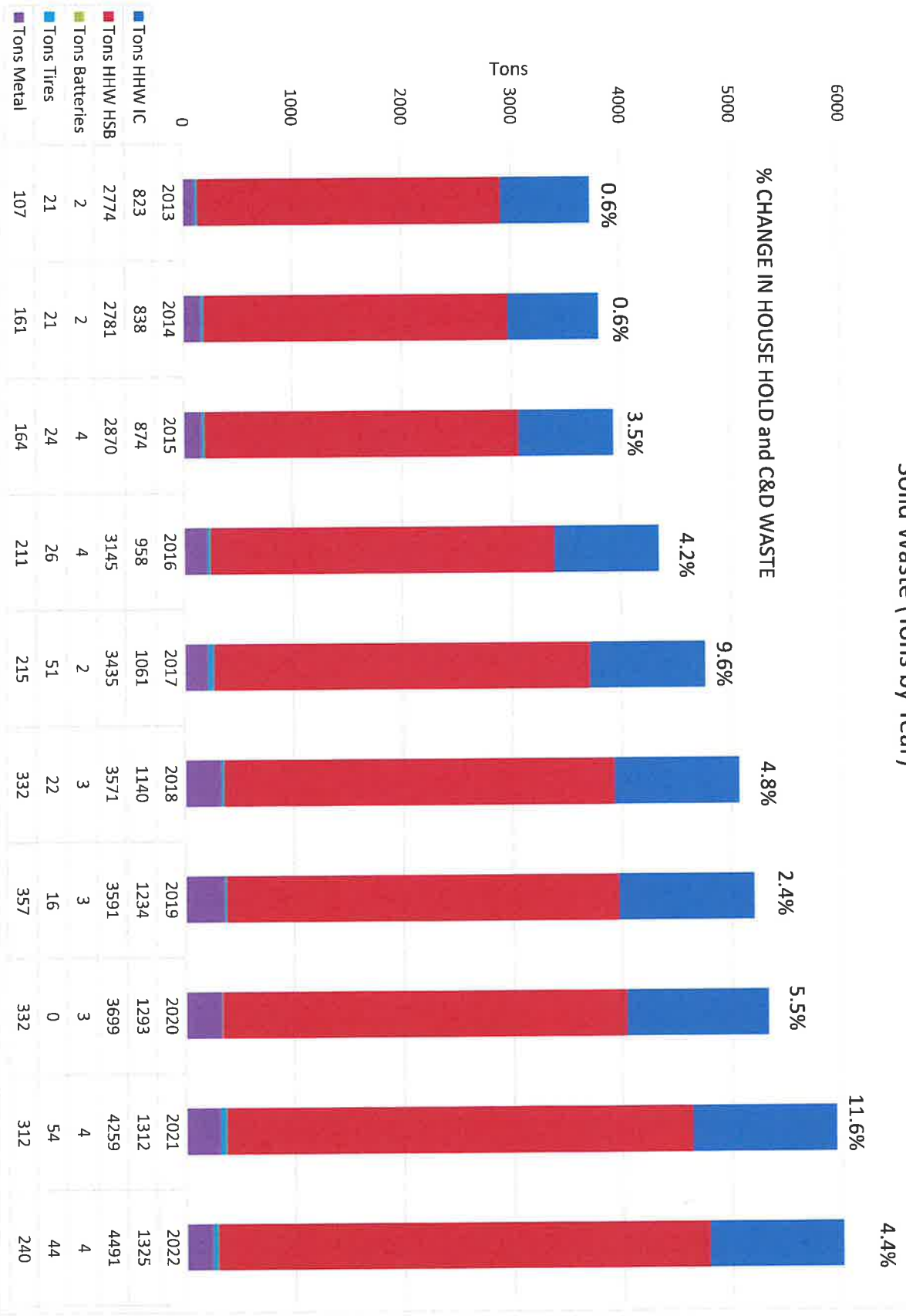
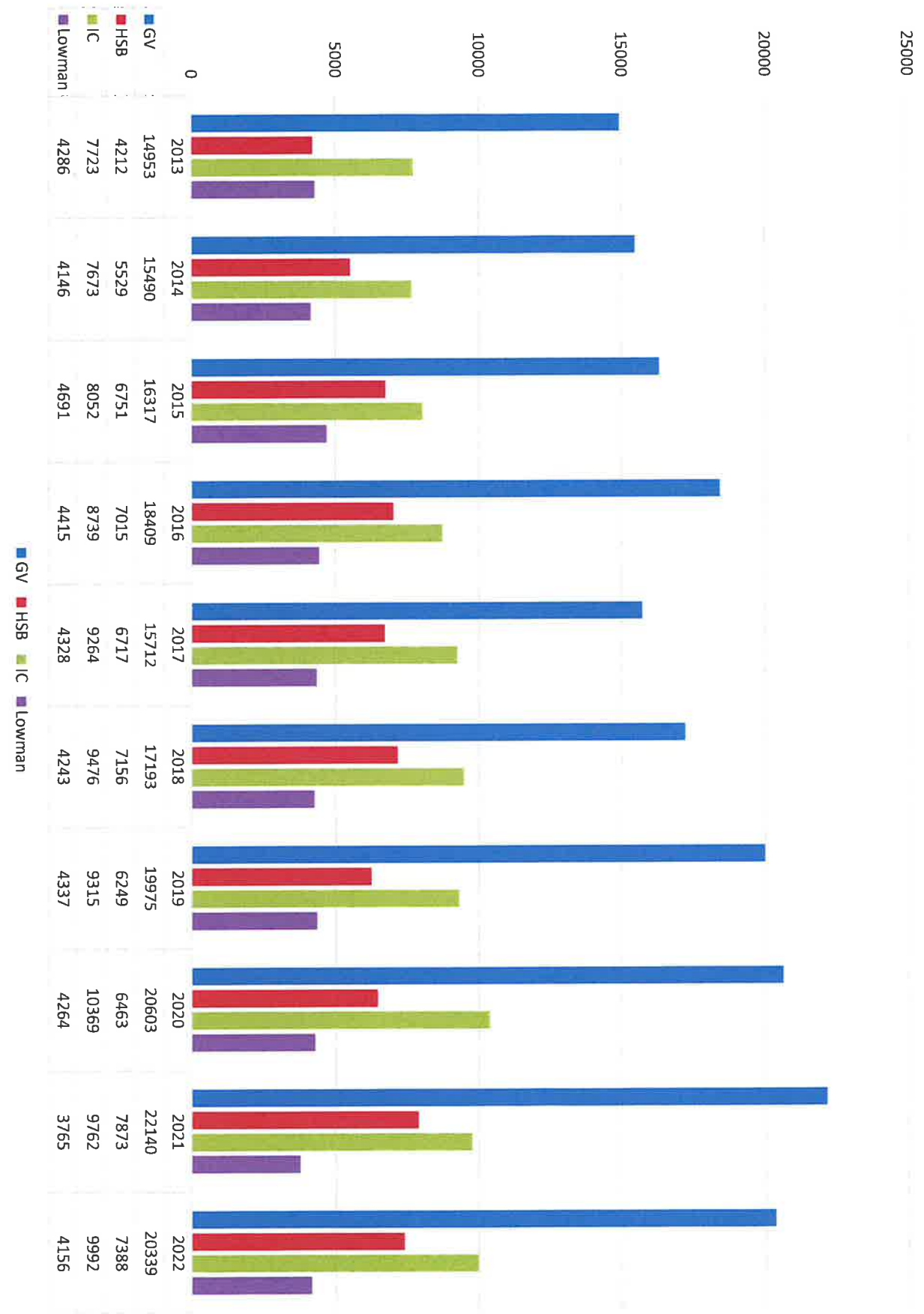


Solid Waste (Tons by Year)

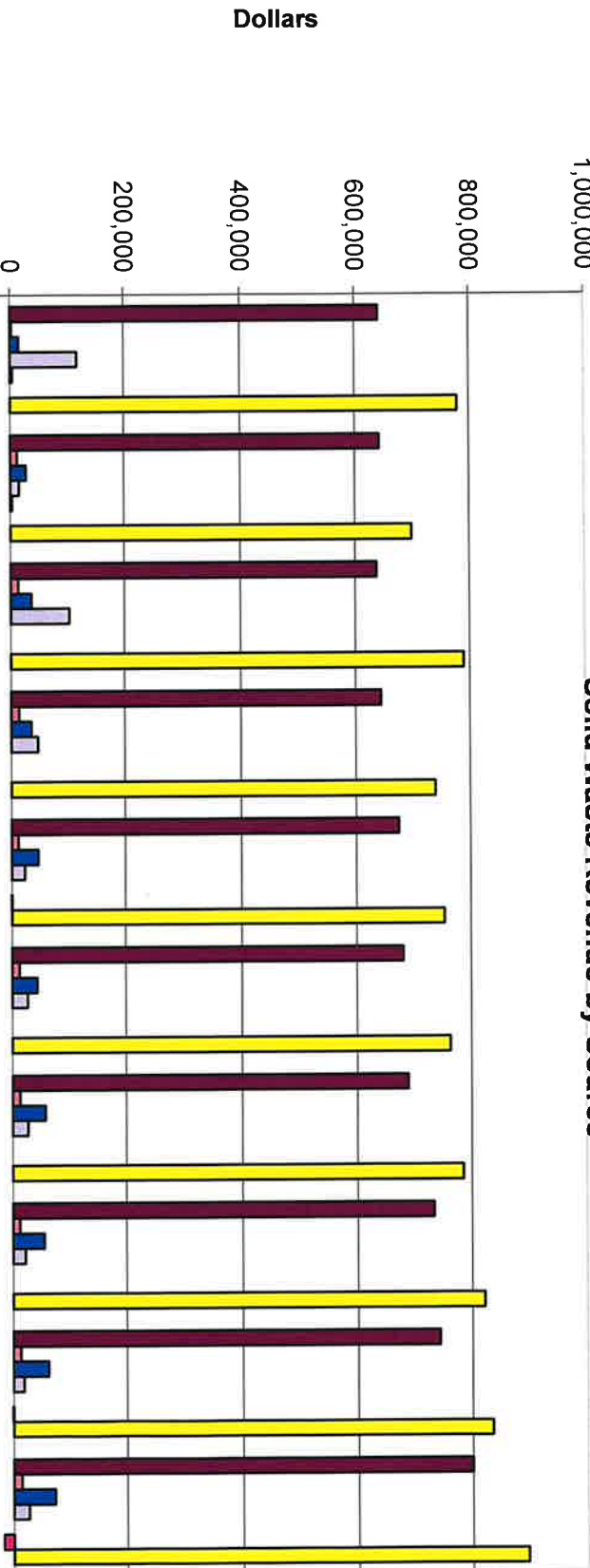


Car Counts



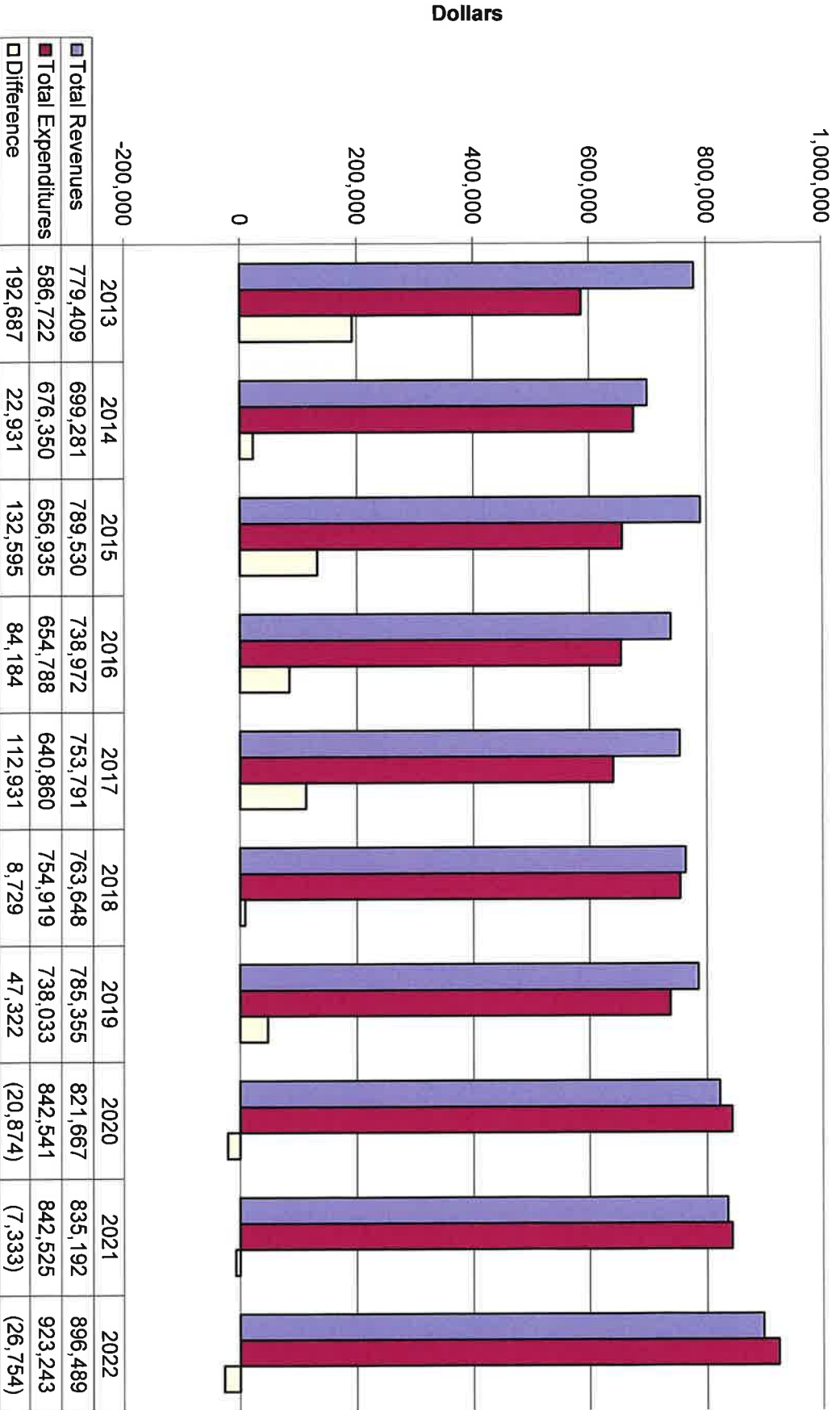
1,000,000

Solid Waste Revenue by Source

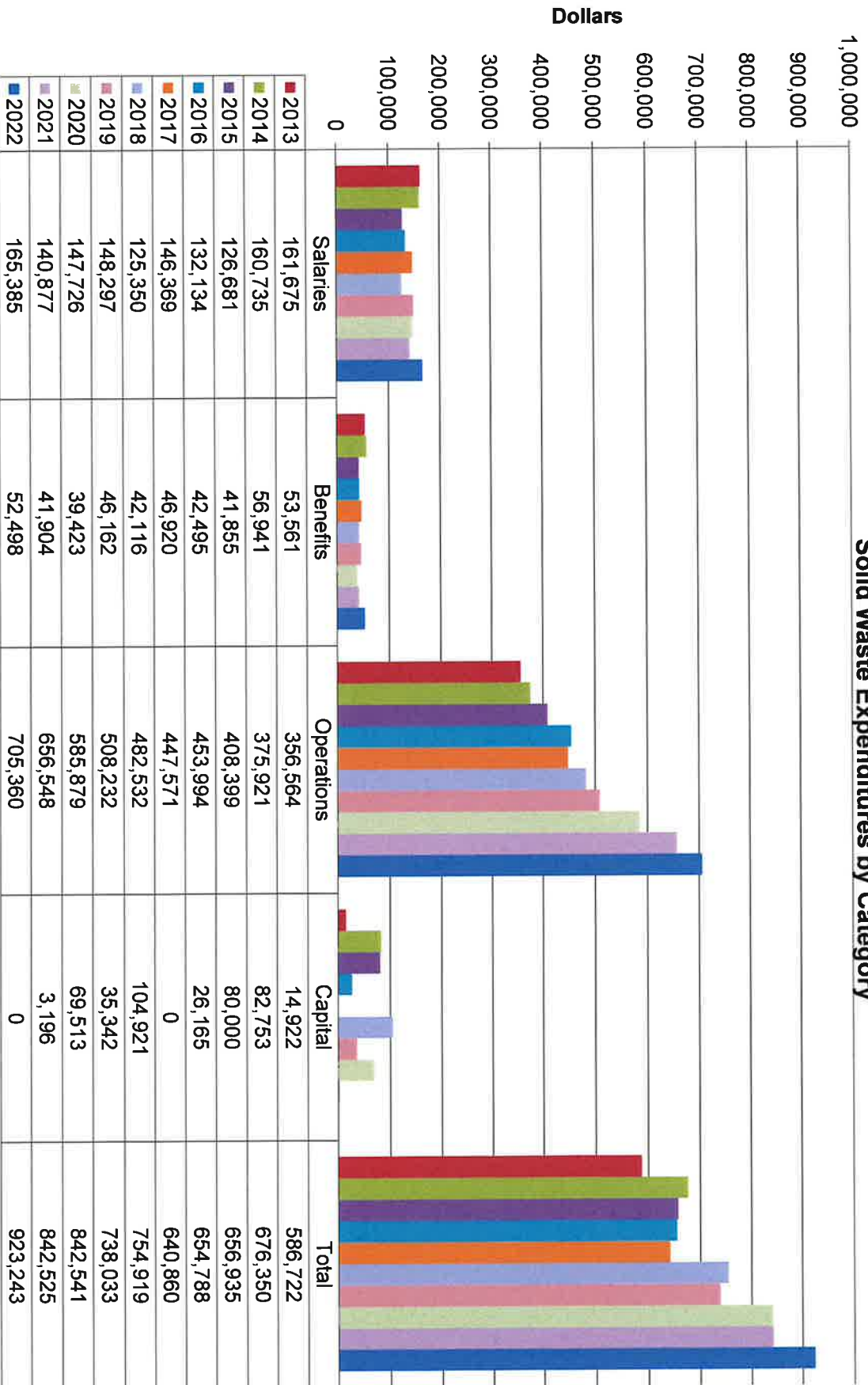


	2013	2014	2015	2016	2017	2018	2019	2020	2021	2022
■ Special Fees	640,813	642,678	637,086	643,886	674,081	681,326	688,892	733,901	743,619	799,715
■ Special Fees (Exempt)	2,149	11,659	13,043	13,502	11,353	12,366	12,663	12,085	12,664	13,961
■ Landfill Fees	14,946	27,071	35,969	34,954	46,198	43,374	57,357	54,474	61,449	72,608
□ Other Revenue	117,479	15,194	103,432	46,630	22,223	26,582	26,443	21,207	18,065	26,796
■ New Construction	4,022	2,679	0	0	0	0	0	0	0	0
■ Transfers	0	0	0	0	-64	0	0	0	-605	-16,591
■ Total	779,409	699,281	789,530	738,972	753,791	763,648	785,355	821,667	835,192	896,489

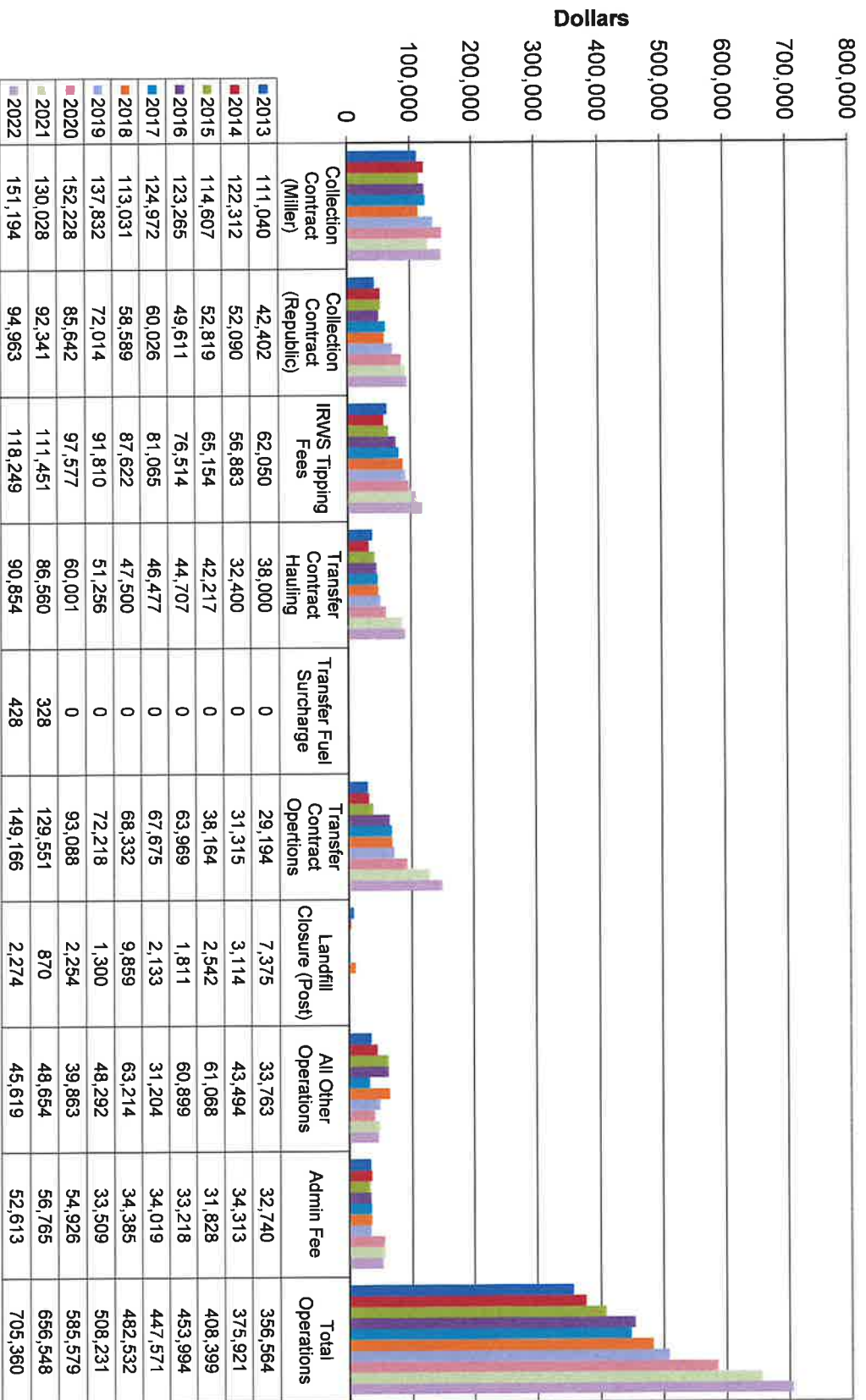
Solid Waste Revenues vs. Expenditures



Solid Waste Expenditures by Category



Operating Expenditures



Capital Expenditures

