



Public Meetings

Becker Integrated Resource Project

Idaho City Ranger District

Two open-house style public meetings will be held to discuss the Becker Integrated Resource Project located on the Idaho City Ranger District of the Boise National Forest.

The meetings will introduce to you the project proposal with time to meet various Forest Service Resource Management Specialists. It is an opportunity to ask questions, offer opinions and provide written public comment if desired. You may also submit written comment later.

The open house style meetings are scheduled from 6:00 p.m. to 8:00 p.m. at the following locations:

- May 20 - Robinson Community Center, 206 W. Commercial Street, Idaho City**
- May 21 – Best Western Plus Vista, 2645 Airport Ave., Boise**



Scoping - seeking public input or comment - is important as the project begins. You will learn about the initial proposal. This is a time to hear your thoughts regarding how best to restore and enhance vegetation, wildlife, fisheries, recreational and other project goals. Your input is appreciated and of value.

For further information, contact the Boise National Forest Headquarters Office at 373-4100 or the Idaho City Ranger District Office at 392-6681.



BECKER INTEGRATED RESOURCE PROJECT SUMMARY

Project Location: The Becker Integrated Resource Project is located in Boise County approximately 48 miles northeast of Boise, Idaho (Please refer to Vicinity Map).

Project Area Size: 19,327 acres

Main Streams: Crooked River, Whoop-Um-Up Creek, Beaver Creek, Little Beaver Creek, Pikes Fork Creek, Banner Creek, and Edna Creek.

Main Forest Types: Ponderosa pine (Figure 1) and Douglas-fir

Main Roads: State Highway 21 and NFS Roads 336, 362, 384, 385, 393 and 394

Main Project Objectives:

- Restore low-to mid-elevation forests in the Project Area.
- Improve watershed conditions in the Project Area.
- Improve and enhance the quality and diversity of recreational opportunities in the Project Area.
- Support local and regional economies through enhancing recreational opportunities, utilizing wood products from suited timber base, and implementing forest restoration activities.

Main Actions Proposed:

- Vegetation management and fuels treatments: 10,624 acres
- NFS roads closed to public motorized access: 24.0 miles
- NFS and unauthorized roads decommissioned: 30.8 miles
- New designated motorized trail for vehicles 50 inches or less: 23.7 miles
- Authorized nonmotorized trail (Summer): 41.4 miles
- Authorized non-motorized trail (Winter): 55.7 miles
- Culvert treatments (for fish passage): 23 culverts

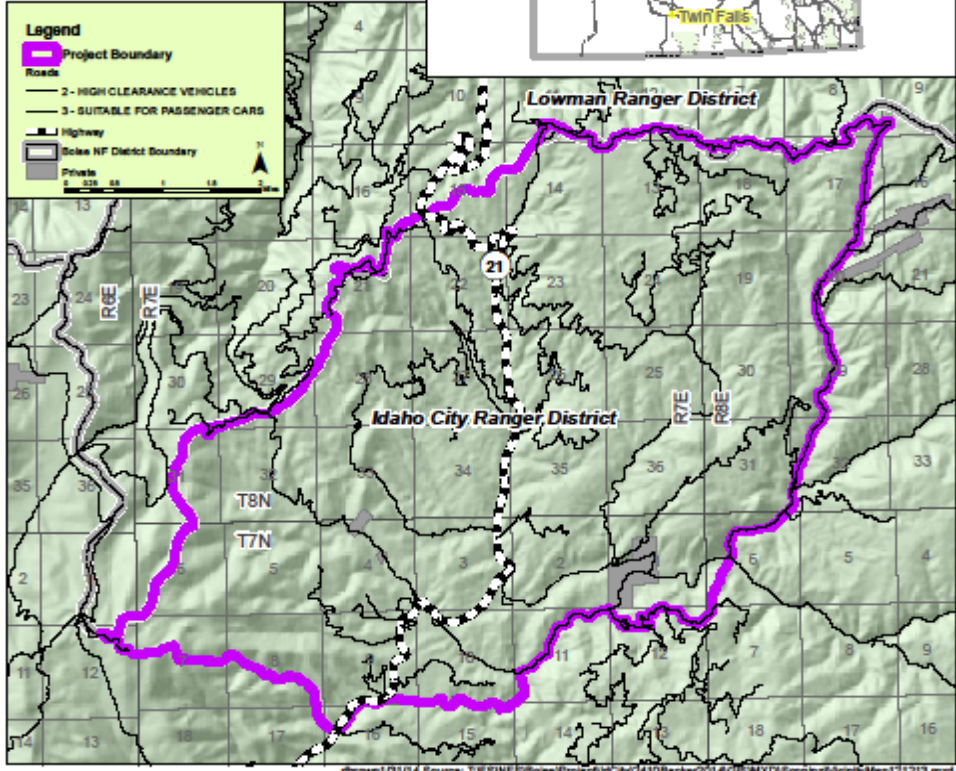
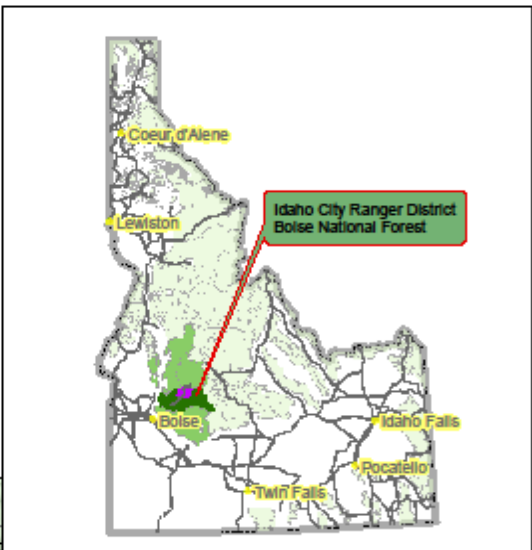
Detailed information about the Becker Integrated Resource Project Proposed Action and supporting maps are available on the project web

page: www.fs.fed.us/nepa/nepa_project_exp.php?project=18922.

Becker Restoration Project

Vicinity Map

The Forest Service uses the most current and complete data available. GIS data and product accuracy may vary. Using GIS products for purposes other than those intended may yield inaccurate or misleading results. Map produced by: Idaho City R. D., Boise N. F.



d:\brown1\01\14 Source: T:\FS\NF\Boise\Project\City\0410Becker\2014\GIS\MXD\Scoping\VicinityMap121213.mxd